

**HAULER DR**

**DURAMAG**



**DR Series**

*All Aluminum Hauler Bodies*

## STANDARD FEATURES

- Steel Sub Frame - 2" x 3" x 3/16" Wall Box Tube
- Sub Frame - Fully Welded and Powder Coated
- Built-in 2" Receiver Hitch with 7-Way Receptacle, 18,000 Lb. Capacity
- Integrated/Gusseted Rear Bumper 3.5" x 3.5" x .250
- Built in 30,000 Lb. Gooseneck Hitch
- D-Rings & 7-Way Trailer Receptacle in Hatch
- Universal Fit to GM, Ford & Dodge Cab Chassis
- 6005 T6 Aluminum G-Tube Body Main Frame
- Reinforced Extruded Aluminum Flooring
- 6005 T6 2" x 3" Box Tube Cross Members
- Headboard with Glide Track for Mounting Lights/Accessories
- Stake Pockets & Rub Rails on Sides & Rear
- Stylish .125 Diamond Plate Tail Skirt Assembly
- Cast Aluminum License Plate Holder
- 2 Cast Aluminum Fuel Fillers
- LED Stop/Turn/Tail Lights & Back Up Lights in Headboard
- LED Lights Fully Through Base Frame - with Shields Where Appropriate
- OEM Plug & Play Wire Harness - Body End Only \*(Adaptors Sold Separately)
- Mounting Kit Includes Shear Plates with Grade 8 Zinc Bolts
- 9' Body Weight - 746 Lbs.
- 11' Body Weight - 801 Lbs.

For more information, visit  
[DuraMagTruckBodies.com](http://DuraMagTruckBodies.com)

DISTRIBUTED BY:

**Candia Trailers &  
Snow Equipment Company**  
**35 High Street**  
**Candia, NH 03034**  
**603.483.2541**  
**866.483.2541**



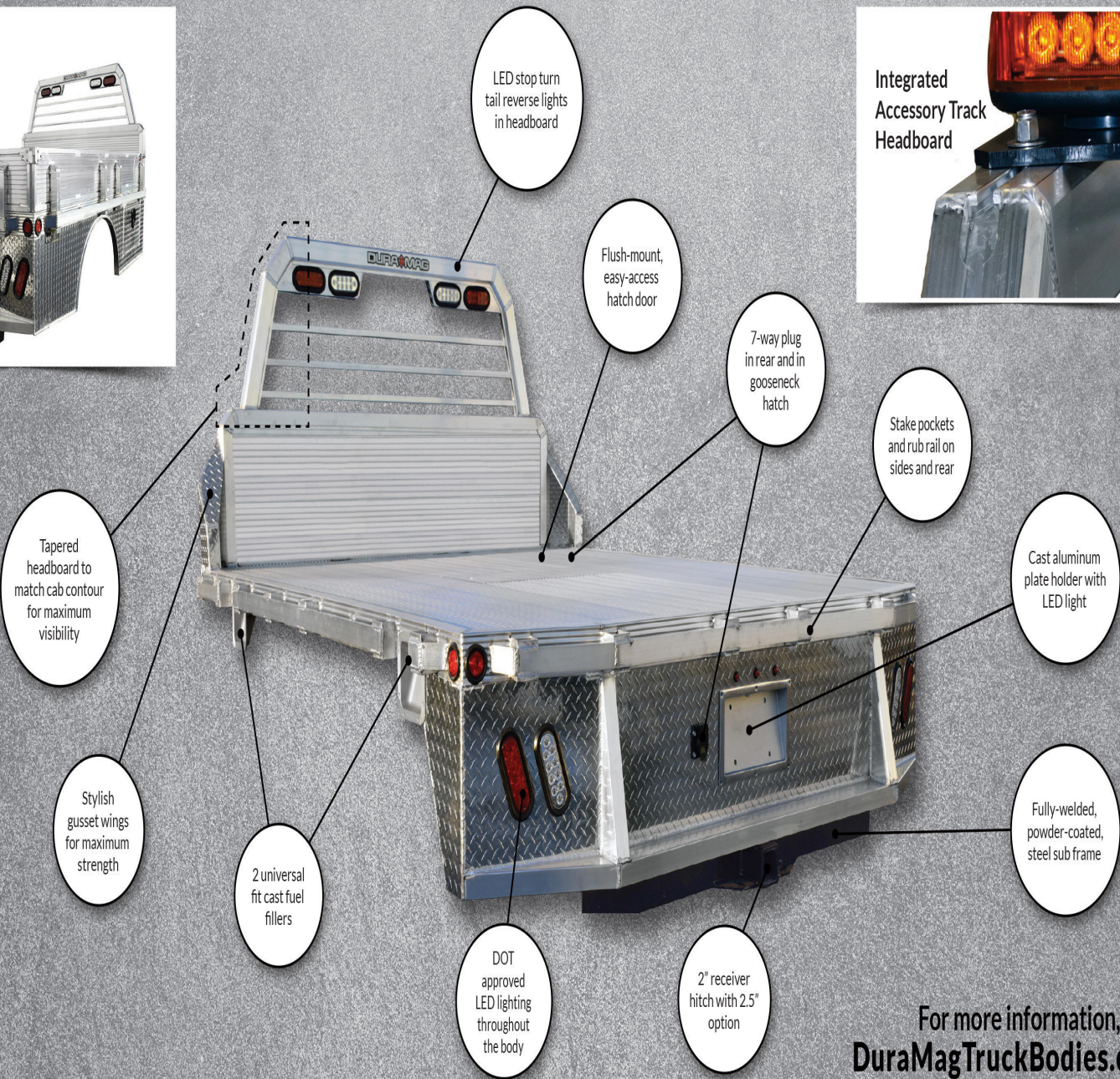
MANUFACTURED BY:  
F3 MFG Inc.  
977 West River Road, #3  
Waterville, Maine 04901  
(207) 660-4700



**Optional Side Boards and Full Skirting**



**Integrated Accessory Track Headboard**



Tapered headboard to match cab contour for maximum visibility

Stylish gusset wings for maximum strength

2 universal fit cast fuel fillers

DOT approved LED lighting throughout the body

2" receiver hitch with 2.5" option

LED stop turn tail reverse lights in headboard

Flush-mount, easy-access hatch door

7-way plug in rear and in gooseneck hatch

Stake pockets and rub rail on sides and rear

Cast aluminum plate holder with LED light

Fully-welded, powder-coated, steel sub frame



For more information, visit [DuraMagTruckBodies.com](http://DuraMagTruckBodies.com)

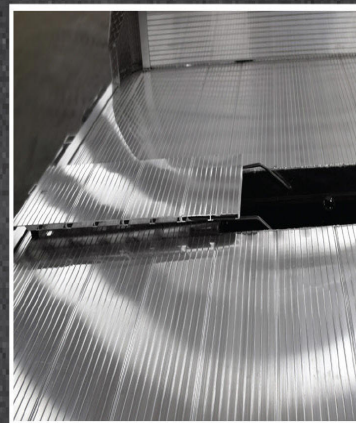


**Underbody Light Corrosion Protection**

**Stop Turn Tail Light Corrosion Protection**



**Integrated Gooseneck Ball with D-Rings & 7-Way Plug**



**Extruded Flush-Mount Gooseneck Hatch Cover**



**Optional Extruded Aluminum Fold Down Rails with Accessory Track**